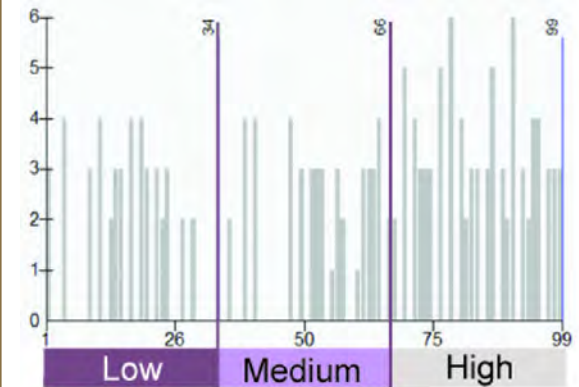


This map shows labor market index provided by the U.S. Department of Housing and Urban Development (HUD) for the HUD Sustainable Communities grantees. This data is a special tabulation provided by HUD for purposes of this assessment. This data is available at the census block group level, but has been assigned to the tract level for the composite.

HUD has provided this labor market engagement index for our region to measure how engaged the residents of an area are in the labor market. This index considers level of employment, labor force participation, and educational attainment of the population residing in a block group. This map displays percentile rankings of each block group weighted by population. A higher percentile indicates greater labor market engagement in a block group, and vice versa.

The full range of data for each map has been divided into thirds to create low, medium, and high categories. A histogram is also included to show that the data is not necessarily distributed equally across these three categories.



Map date: 9/16/13 Map data: U.S. Census Bureau; U.S. Department of Housing and Urban Development. Caution: This map is based on imprecise source data, subject to change, and for general reference only. The work that provided the basis for this map was supported by funding under an award with the U.S. Department of Housing and Urban Development. The substance and findings of the work are dedicated to the public. The author and publisher are solely responsible for the accuracy of the statements and interpretations contained in this publication. Such interpretations do not necessarily reflect the views of the Government.

- Census 2010 Tracts
- Metropolitan Planning Organization Area boundary
- Urban Growth Boundaries

- HUD Labor Market Engagement Index (Block group)**
- Low: 1 - 34
 - Medium: 35 - 66
 - High: 67 - 99